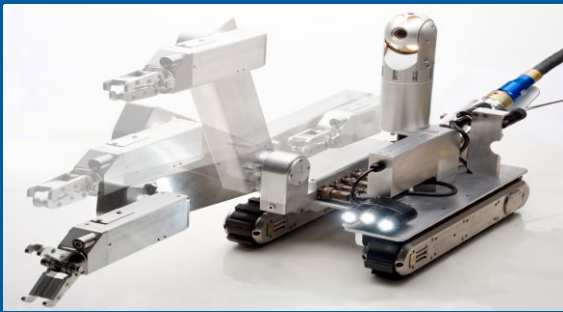
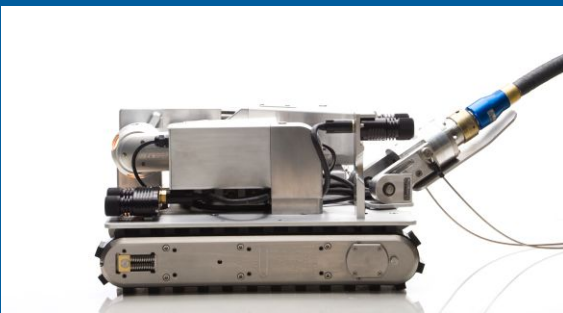
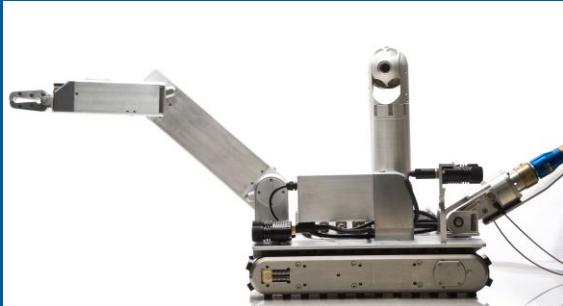


The Evolution of Remote Inspection

Inuktun technology lets you... see it for yourself.



Conquering dangerous environments with ease, the Versatrax 450™ Tank and Tunnel Crawler (TTC) is perfectly suited for a number of industrial situations where sending in a person is neither preferred nor possible. Portable setup and deployment allows for quick and efficient inspection, capture and removal. Precise controls allow for ease of operation, delivering power and reliability at the touch of a button so you can ...see it for yourself.

APPLICATIONS

- Radioactive waste site cleaning and disposal
- Suspicious package/EOD inspection and removal
- Hazardous material sampling, object recovery
- Remote deployment of onboard sensor packages

BENEFITS

- Portable inspection capability up to 500' /152m
- Two onboard color cameras; one for 360° views and one for manipulator arm close-ups
- Built-in camera lights and two auxiliary lights for maximum visibility in the darkest of environments
- Four function manipulator control arm which folds away for flat storage
- Intuitive multi joystick controller layout with sensitive controls for easy operation
- Rugged 6000 Series Extended Minitracs™ for superior traction and navigation
- Scalable framework for industry-specific modifications

For more information
on advanced remote
inspection systems
contact Inuktun today.



VERSATRAX 450 TTC

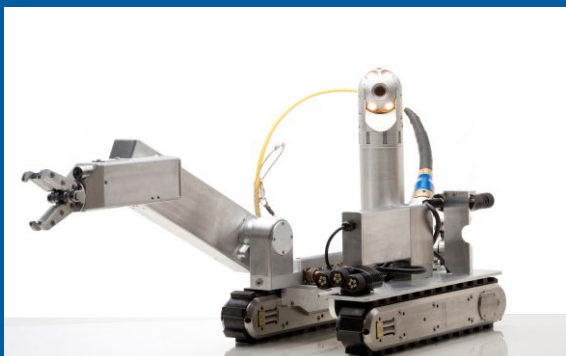
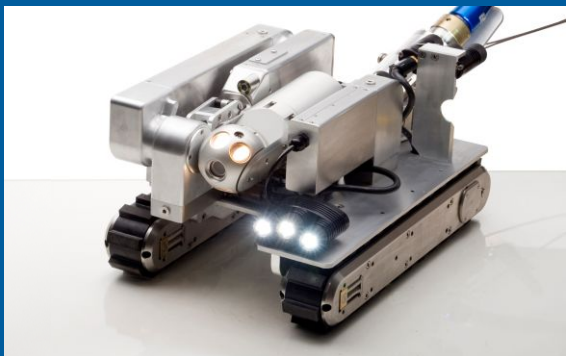


see it for yourself.

PHONE 1 877 468 5886

EMAIL sales@inuktun.com

ONLINE www.inuktun.com



Vehicle

Chassis Dimensions

(Camera Lowered / Manipulator Arm Folded)
 19.95" L x 14.45" W x 12.5" H (50.67cm x 36.7cm x 31.7cm)
 (Camera Raised / Manipulator Arm Extended)
 21.95" L x 14.45" W x 20.4" H (55.75cm x 36.7cm x 51.8cm)

Speed Up to 30'/9m per minute

Transporter 2 Extended Minitrac™ Crawler Units (SS or Aluminum)

Tether Cable 500'/160m ; Multi-conductor; Abrasion Resistant Rilsan

Weight 100lbs /45kg with Aluminum Minitracs™

Minimum Entry Point Diameter 15" /38.1cm

Manipulator : 4 function arm with built-in camera

Shoulder Rotation 210°

Elbow Rotation 315°

Wrist Rotation Continuous

Gripper Rotation Opens 90°, or 3¼"/19.68cm

Manipulator Payload 16 lb. (at 24" from front of vehicle)

32 lb. (at 12" from front of vehicle)

Chassis Material 6061-T6 Aluminum

Camera

Material Aluminum

Type 1/4" Colour EX VIEW CCD (NTSC or PAL format)

Sensitivity <1.5 lux

Resolution 460 TV Lines

Focus Auto or Manual (Remote)

Exposure Auto and Manual

Zoom 40:1 (10x optical 4x digital)

Lights 4 x 11.3W = 45.2W total (2 x Flood, 2 x Spot)

Camera Weight 5.5lb /2.5kg (Aluminum Version)

Auxiliary Functions

Manipulator Camera Colour CMOS w/ 4 high intensity LED's

Lighting 2 x 704 lights (Tri-LED enclosure with variable intensity)

Operating Environment

Temperature 0°-40°C (32°-104°F)

Control System

Power 88-264 VAC 50 /60Hz

Interface Membrane panel with joystick and keyboard entry

Tether Reel Electric Variable speed, 1hp motor, distance counter.

Tether Reel Manual Crank tether reel in a Pelican® Case

Video Overlay Date /time, pan /tilt feedback, tether distance,

Options 10.2" monitor, Digital video recorder(DVR), inclinometer, directional compass monitoring, chronometer, laser site lines, laser profiler

Inuktun Services Ltd.

www.inuktun.com

Phone: 1-877-468-5886

Email: sales@inuktun.com